



GUAM POWER AUTHORITY

ATURIDĀT ILEKTRESEDĀT GUĀHAN
P.O.BOX 2977 • HAGĀTÑA, GUAM U.S.A. 96932-2977

FOR IMMEDIATE RELEASE

April 19, 2026

**FOR MORE INFORMATION
CONTACT: JOYCE SAYAMA
COMMUNICATIONS MANAGER
PHONE NO.: 671 648-3145**

ADVISORY TO THE PUBLIC Damaged Weatherheads and other Electrical Components

(Fadian, Mangilao) – The Guam Power Authority (GPA) continues its power restoration efforts and has made significant progress on post-typhoon recovery. While restoration is ongoing, customers are advised to conduct their own home and property assessment of weatherhead and electrical components, taking necessary steps to repair damages caused by Typhoon Sinlaku.

Frequently Asked Question:

My weatherhead and/or electrical components (meter box, service entrance conduit & cable, riser) are damaged. What should I do? These components are the customer's responsibility.

1. The account holder or an authorized representative must visit any GPA Customer Service lobby to request a work clearance. A GPA representative will then issue the work clearance along with a GPA Electrical Inspection Report form.
2. A GPA crew will schedule the removal of the service line and meter. **Once these are removed, the customer may hire a licensed master electrician or a licensed electrician to carry out the necessary repairs. A list of licensed professionals is available on the Guam Contractors License Board website at <http://clb.guam.gov/index.php/contractors-listing/>.*
3. Once the repairs are completed, the licensed master electrician or electrician must print their name, sign, and include their license number on the GPA Electrical Inspection Report form. The customer must then take the inspection report to the Department of Public Works for approval.
4. Keep the original signed Electrical Inspection Report form. Contact GPA Customer Service at (671) 647-5787/88/89, email customersfirst@gpagwa.com, or send a direct message to the GPA Facebook page to notify a representative that the work has been completed.
5. The customer will be notified once the meter installation and service line reconnection have been scheduled. The customer must present the Electrical Inspection Report to the GPA crew upon their arrival. **Please note that scheduling could be delayed as GPA continues to repair the island-wide power system.*

GPA Locations & Hours

Fadian Customer Service Center & Main Office

Gloria B. Nelson Public Service Building 688 Route 15 Fadian, Mangilao, Guam

Monday-Friday 7:00 a.m. – 5:00 p.m.

Closed on Weekends & Holidays

Hagatna Customer Service Lobby

Julale Shopping Center Ste 103,

424 West O'Brien Drive, Hagåtña, Guam

Monday-Friday 8:00 a.m. - 5:00 p.m.

Closed on Weekends & Holidays

GPWA Upper Tumon Lobby

578 North Marine Corps Drive, Tamuning, Guam

Monday-Friday 7:30 a.m. - 6:00 p.m.

Saturday 8:00 a.m. - 12:00 p.m.

To get the most up-to-date information, please visit our website at www.quampowerauthority.com and click on our [Post-Typhoon Sinlaku Restoration Updates](#) banner on our homepage or follow our official social media pages:

Facebook: <https://www.facebook.com/GuamPowerAuthority>

Instagram: <https://instagram.com/quampowerauthority>

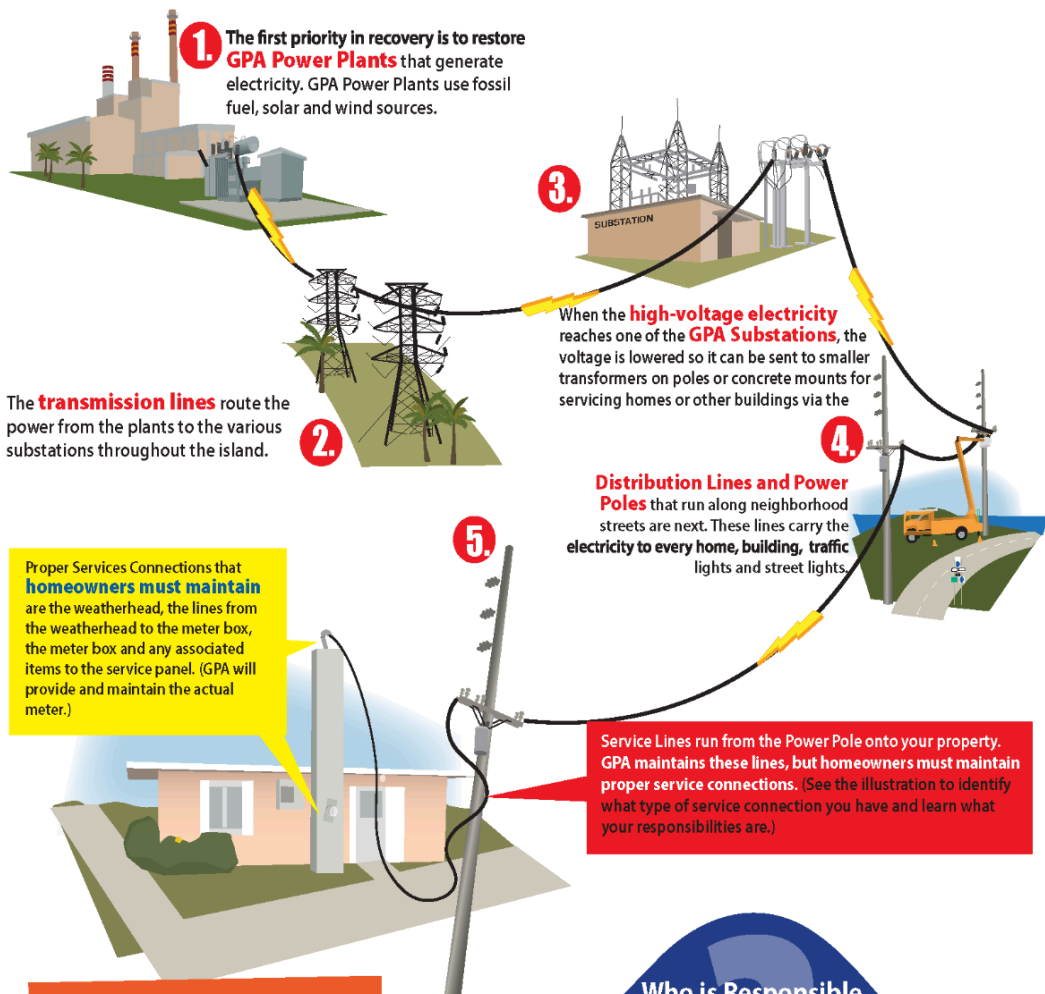
Attachment:

How Power is Restored Graphic

HOW POWER IS RESTORED AFTER TROPICAL STORMS AND TYPHOONS

How GPA Restores Power to Your Home

To restore service as quickly as possible, GPA must repair all components in the prioritized order shown below.



Remember,
HIGH VOLTAGE KILLS
 Downed or dangling power lines can cause electrocution

After the storm passes, look around and be alert for fallen or downed power lines. Consider ALL fallen lines to be "live" to avoid severe injury or death.

Electricity travels through standing water and can cause electrocution

Avoid flooded areas even if they are shallow. Don't step into water in case a downed power line is touching it. Remember, the power line may be some distance away or even out of sight.

Who is Responsible for Fixing What?

If your electrical components are damaged, you may be responsible for repairs. Identify your type of service connection below to learn more.

CUSTOMER'S RESPONSIBILITY	GPA'S RESPONSIBILITY
<p>Labels: WEATHERHEAD, SERVICE ENTRANCE CONDUIT & CABLE, SERVICE LINE, METER BOX, METER, SERVICE LINE.</p>	<p>Labels: WEATHERHEAD, ATTACHMENT HARDWARE, SERVICE LINE, GPA point of connection, RISER, METER BOX, METER.</p>
<p>Labels: PRIMARY OVERHEAD SERVICE, TRANSFORMER, SECONDARY FIELD, METER, METER BOX, SERVICE ENTRANCE CONDUIT & CABLE, ELECTRICIAN IN VEHICLE.</p>	<p>Labels: PRIMARY OVERHEAD SERVICE, TRANSFORMER, SECONDARY FIELD, METER, METER BOX, SERVICE ENTRANCE CONDUIT & CABLE, ELECTRICIAN IN VEHICLE.</p>

Want to learn more?
www.guampowerauthority.com